

# ADAPTIVE LEADERSHIP — MIT SLOAN SCHOOL OF MANAGEMENT PROGRAM

---



# Contents

## **1. Introduction to Adaptive Leadership**

## **2. Why Choose Chools**

## **3. Who Can Apply?**

## **4. Program Overview**

## **5. Objectives and Outcomes**

## **6. Skills Learned**

## **7. Job Positions and Opportunities**

## **8. Key Industry Verticals**

## **9. Program Outline**

- Stage 1: Fundamentals of Adaptive Leadership
- Stage 2: Advanced Adaptive Change Techniques
- Stage 3: Practical Applications
- Stage 4: Capstone Project
- Elective Modules

## **10. Enrollment Information**



# Introduction to Adaptive Leadership

Welcome, future change leader! The Adaptive Leadership course from MIT Sloan School of Management teaches participants how to lead and manage change in uncertain and complex environments using a proven, comprehensive change model. The course covers the definition and importance of adaptive leadership, tools and frameworks for diagnosing and addressing adaptive challenges, skills and techniques for leading and communicating adaptive change, strategies and best practices for fostering a culture of learning and innovation, and the challenges and opportunities of adaptive leadership in a global and digital context.





# Why Choose Chools?

## Numbers That Speak for Themselves:

- **10,000+ Successful Alumni:** Join a network of impactful professionals.
- **95% Job Placement Rate:** Secure your future with Chools' proven track record.
- **20+ Years of Excellence:** Trust in a legacy of education and industry expertise.
- **200+ Industry Partnerships:** Leverage our connections for real-world insights and opportunities.

## What Sets Us Apart?

- **Expert Instructors:** Learn from industry veterans with hands-on experience.
- **Hybrid Learning Model:** Balance online flexibility with in-person engagement.
- **Comprehensive Curriculum:** Stay ahead with courses designed meet market demands.
- **Community and Networking:** Be part of an active community of learners and professionals.

## Who Can Apply?

### Eligibility Criteria:

- A bachelor's degree or equivalent from an accredited institution.
- At least five years of professional work experience, preferably in a leadership role.







- Proficiency in English.
- Complete an online application and submit a resume and a statement of purpose.

### **Ideal Candidates:**

- Professionals aiming to enhance their adaptive leadership skills and advance their careers in leadership roles.

## **Program Overview**

**The Adaptive Leadership Program from MIT Sloan School of Management provides extensive education in adaptive leadership practices. Our curriculum ensures a comprehensive understanding through four progressive stages, combining theoretical knowledge with practical, hands-on experience.**

### **Learning Mode:**

- **Hybrid Learning Model:** Combines online learning with in-person sessions for flexibility and interactive engagement.
- **Interactive Sessions:** Includes live webinars, workshops, and Q&A forums with expert instructors and peers.
- **Self-paced Learning:** Access course materials anytime, allowing you to learn at your own pace.



# Curriculum Highlights

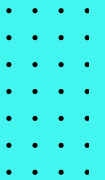
- **Fundamental Knowledge:** Core principles of adaptive leadership.
- **Advanced Techniques:** In-depth understanding of adaptive change tools and practices.
- **Real-World Applications:** Practical projects and case studies to apply your learning.
- **Professional Development:** Continuous learning and networking opportunities to advance your career.

## Program Objectives

- Master the principles of adaptive leadership.
- Apply advanced tools and frameworks for diagnosing and addressing adaptive challenges.
- Enhance skills for leading and communicating adaptive change.
- Foster a culture of learning and innovation.
- Address challenges and opportunities in a global and digital context.
- Foster continuous learning.
- Encourage teamwork and collaboration.
- Prepare for advanced roles in adaptive leadership.

## Expected Outcomes

- Proficiency in adaptive leadership tools and techniques.
- Practical experience through hands-on projects.
- Strong analytical and problem-solving skills.
- Application of innovative and adaptive thinking.
- Enhanced communication and leadership skills.



## Skills Learned

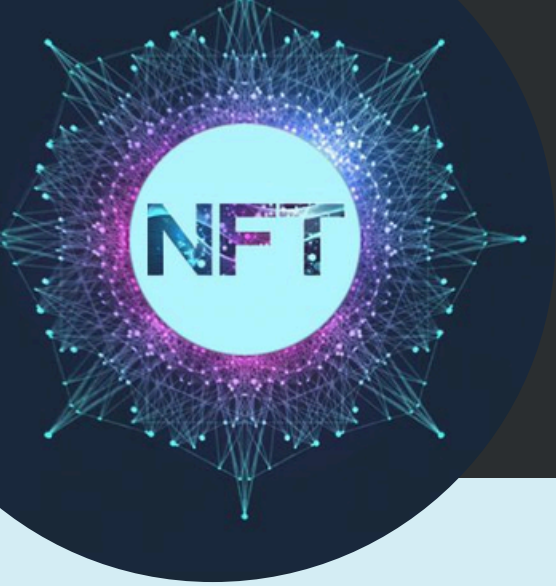
- **Adaptive Leadership:** Understanding the definition and importance of adaptive leadership.
- **Diagnostic Tools and Frameworks:** Utilizing tools and frameworks for diagnosing and addressing adaptive challenges.
- **Leading Adaptive Change:** Skills and techniques for leading and communicating adaptive change.
- **Learning and Innovation Cultures:** Strategies and best practices for fostering a culture of learning and innovation.
- **Global and Digital Context:** Navigating the challenges and opportunities of adaptive leadership in a global and digital context.

## Job Positions and Opportunities

- **Career Paths:** Executive Manager, Strategy Manager, HR Manager, Organizational Development Specialist, Leadership Development Consultant.
- **Industry Demand:** High demand across various sectors, competitive salaries, and strong growth potential.

## Key Industry Verticals

- **Skill Application Areas:** Technology, Finance, Healthcare, Government, Retail, Energy, Telecommunications, Manufacturing.



# Program Outline

## Stage 1: Fundamentals of Adaptive Leadership

### 1. Introduction to Adaptive Leadership

- Core principles, tools, and frameworks.

### 2. Diagnostic Tools and Frameworks

- Utilizing tools and frameworks for diagnosing adaptive challenges.

### 3. Adaptive Leadership Concepts

- Understanding the definition and importance of adaptive leadership.

### 4. Leading Adaptive Change

- Skills and techniques for leading and communicating adaptive change.

## Stage 2: Advanced Adaptive Change Techniques

### 5. Advanced Adaptive Change Management

- Implementing advanced tools and frameworks for adaptive change.

### 6. Innovation and Learning Cultures

- Fostering a culture of learning and innovation.

### 7. Adaptive Change Strategies

- Developing and applying adaptive change strategies.

## 8. Evaluating Adaptive Change Initiatives

- Measuring and evaluating the effectiveness of adaptive change initiatives.

## Stage 3: Practical Applications

### 9. Practical Adaptive Leadership Projects

- Developing and implementing adaptive leadership projects.

### 10. Global and Digital Strategies

- Navigating adaptive leadership challenges in a global and digital context.

### 11. Ethics and Compliance in Leadership

- Ensuring ethical practices and compliance.

### 12. Business Intelligence Applications

- Using data for adaptive leadership decision making.

## Stage 4: Capstone Project

### 13. Integration of Learned Skills

- Apply tools and techniques to real-world adaptive leadership problems.

### 14. Advanced Adaptive Leadership Systems

- Developing complex adaptive leadership systems.





# Program Outline

## 15. Organizational Effectiveness

- Enhancing organizational effectiveness through adaptive leadership.

## 16. AI for Adaptive Leadership

- Implementing AI solutions in adaptive leadership.

## Elective Modules

### 17. Data Ethics and Privacy

- Ethical considerations, privacy laws, compliance strategies.

### 18. Predictive Analytics with Adaptive Leadership

- Building and validating predictive models.

### 19. AI for Adaptive Leadership

- Implementing AI solutions in adaptive leadership.

### 20. Advanced Data Warehousing Techniques

- Optimizing data warehousing solutions.

### 21. Data-Driven Adaptive Leadership Decision Making

- Using data to inform and drive adaptive leadership strategies.

## 22. Cloud Adaptive Leadership Solutions

- Deploying adaptive leadership systems on cloud platforms.

## 23. Adaptive Leadership Project Management

- Leading adaptive leadership projects, ensuring successful delivery.

## 24. Big Data Security

- Securing data in big data environments.

## 25. IoT for Adaptive Leadership

- Securing and managing IoT devices in adaptive leadership.

## Enrollment Now Open

Take the first step towards becoming a certified Adaptive Leadership Professional. Enroll in our program and enhance your career.