

SUPPLY CHAIN ANALYTICS & CONTROL TOWER PROFESSIONAL





Contents

1. Introduction to Supply Chain Analytics & Control Tower Professional
2. Why Choose This Program?
3. Who Can Apply?
4. Program Overview
5. Objectives and Outcomes
6. Skills Learned
7. Job Positions and Opportunities
8. Key Industry Verticals
9. Program Outline
 - Stage 1: Fundamentals of Supply Chain Analytics & Control Tower Professional
 - Stage 2: Advanced Tools and Techniques
 - Stage 3: Practical Applications
 - Stage 4: Capstone Project
 - Elective Modules
10. Enrollment Information



info@ramaqchools.com



+966536834733



ramaqchools.com



Introduction to Supply Chain Analytics & Control Tower Professional

A Supply Chain Analytics & Control Tower Professional course is a course that teaches you how to use data analytics to optimize and monitor the performance of your supply chain. It covers topics such as supply chain visibility, data integration, predictive analytics, dashboard design, and control tower implementation. It also prepares you for the challenges and opportunities of digital transformation in the supply chain domain.

Why Choose Chools?

Numbers That Speak for Themselves:

- 10,000+ Successful Alumni: Join a network of impactful professionals.
- 95% Job Placement Rate: Secure your future with Chools' proven track record.
- 20+ Years of Excellence: Trust in a legacy of education and industry expertise.
- 200+ Industry Partnerships: Leverage our connections for real-world insights and opportunities.



What Sets Us Apart?

- **Expert Instructors:** Learn from industry veterans with hands-on experience.
- **Hybrid Learning Model:** Balance online flexibility with in-person engagement.
- **Comprehensive Curriculum:** Stay ahead with courses designed to meet market demands.
- **Community and Networking:** Be part of an active community of learners and professionals.



Who Can Apply?

Eligibility Criteria:

- 3 years of related business experience or
- A bachelor's degree or the international equivalent or
- A certification in supply chain management, logistics, or purchasing .

Ideal Candidates:

Working professionals looking to advance their careers in Supply Chain Analytics & Control Tower Professional.



Program Overview

The Supply Chain Analytics & Control Tower Professional Emerging Business Program provides an extensive education in Supply Chain Analytics & Control Tower Professional . Our curriculum ensures a comprehensive understanding through four progressive stages, combining theoretical knowledge with practical, hands-on experience.

Learning Mode:

- **Hybrid Learning Model:** Combines online learning with in-person sessions for flexibility and interactive engagement.
- **Interactive Sessions:** Includes live webinars, workshops, and Q&A forums with expert instructors and peers.
- **Self-paced Learning:** Access course materials anytime, allowing you to learn at your own pace.



info@ramaqchools.com



+966536834733



ramaqchools.com

Curriculum Highlights:

- **Fundamental Knowledge:** Core principles of Supply Chain Analytics & Control Tower Professional
- **Advanced Techniques:** In-depth understanding of advanced tools.
- **Real-World Applications:** Practical projects and case studies to apply your learning.
- **Capstone Project:** A final project that integrates all your skills and knowledge, showcasing your proficiency in Supply Chain Analytics & Control Tower Professional

Professional Development:

- **Continuous Learning:** Stay updated with the latest trends and advancements in Supply Chain Analytics & Control Tower Professional.
- **Networking Opportunities:** Connect with industry experts, peers, and alumni to advance your career.
- **Ethical Considerations:** Learn about data ethics, privacy, and compliance to maintain the integrity of your practices.



Program Objectives

- Understand Global Supply Chain Dynamics
- Implement Advanced Technologies
- Optimize Supply Chain Processes
- Ensure Data-Driven Decision Making
- Navigate International Trade and Compliance





Supply Chain Analytics & Control Tower Professional

Expected Outcome

- Proficiency in Supply Chain Analytics & Control Tower Professional tools and techniques.
- Practical experience through hands-on projects.
- Strong analytical and problem-solving skills.
- Application of ethical practices.
- Innovation in Supply Chain Analytics & Control Tower Professional solutions.

Skills Learned

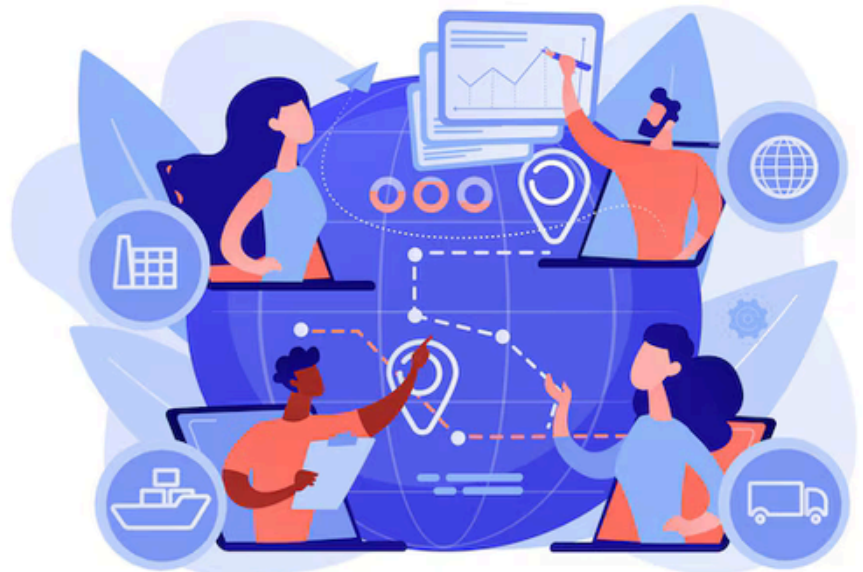
- **Advanced Technology Integration:** Learn to implement and manage advanced technologies such as AI, IoT, blockchain, and robotics to enhance supply chain operations.
- **Global Supply Chain Management:** Gain expertise in coordinating and managing supply chain activities across international borders, including sourcing, production, and distribution.
- **Data Analytics:** Develop proficiency in data analytics and reporting tools to make informed decisions and drive continuous improvement in supply chain processes.
- **International Trade and Compliance:** Understand and navigate international trade regulations, customs compliance, and trade finance practices to facilitate seamless cross-border transactions.

SUPPLY CHAIN ANALYTICS & CONTROL TOWER PROFESSIONAL



Job Positions and Opportunities

- TPM Manager
- Assistant Manager Maintenance
- Maintenance Engineer
- Manufacturing Engineer
- Zero Emission Bus - Total Program Sales Manager
- Maintenance Engineer (Quality HR Services).



Key Industry Verticals

E-commerce and Retail, Manufacturing and Automotive, Healthcare and Pharmaceuticals, Technology and Electronics, Logistics, SOil and Gas, Agriculture and Agribusiness, Fashion and Apparel.

Industry Demand

- High demand across various sectors
- Competitive salaries
- Strong growth potential



info@ramaqchools.com



+966536834733



ramaqchools.com



Supply Chain Analytics & Control Tower Professional

Program Outline

Stage 1: Fundamentals of Supply Chain Analytics & Control Tower Professional

- **Supply Chain Analytics:** Understanding the principles and practices of using data analytics to gain insights into supply chain operations.
- **Control Tower Technology:** Familiarity with control tower solutions like SAP Supply Chain Control Tower, which provide real-time visibility and decision-making capabilities.
- **Data Integration:** Integrating data from various sources to create a comprehensive view of the supply chain.



Supply Chain Analytics & Control Tower Professional

Stage 2: Advanced Supply Chain Analytics & Control Tower Professional Techniques

- **Advanced Data Analytics:** Utilize sophisticated data analytics techniques to gain deeper insights into supply chain operations and performance.
- **Control Tower Technology:** Implement and manage control tower solutions that provide real-time visibility and decision-making capabilities across the supply chain.
- **Predictive and Prescriptive Analytics:** Use predictive analytics to forecast potential disruptions and prescriptive analytics to recommend optimal actions.

Supply Chain Analytics & Control Tower Professional



Stage 3: Practical Applications

- **Real-Time Supply Chain Visibility:**
Implement control tower solutions to provide real-time visibility into supply chain operations, enabling proactive decision-making and quick responses to disruptions.
- **Predictive Analytics for Forecasting:**
Use predictive analytics to forecast potential supply chain disruptions and optimize inventory levels, reducing lead times and improving customer satisfaction.
- **Process Optimization:** Analyze supply chain processes to identify inefficiencies and implement improvements to enhance performance and reduce costs.

Stage 4: Capstone Project

- **Data Integration and Aggregation:**
Integrate data from various sources to create a unified view of the supply chain, ensuring accurate and comprehensive insights
- **Real-Time Visibility Implementation:**
Implement control tower solutions to provide real-time visibility into supply chain operations, enabling proactive decision-making.
- **Predictive and Prescriptive Analytics:**
Utilize predictive analytics to forecast potential disruptions and prescriptive analytics to recommend optimal actions for mitigating risks.



Supply Chain Analytics & Control Tower Professional

Elective Modules

- **Advanced Data Analytics:** Learn advanced techniques for analyzing supply chain data to gain deeper insights and drive decision-making.
- **Control Tower Technology Implementation:** Gain hands-on experience in implementing control tower solutions like SAP Supply Chain Control Tower to enhance visibility and decision-making.
- **Predictive and Prescriptive Analytics:** Explore predictive and prescriptive analytics to forecast potential disruptions and recommend optimal actions for mitigating risks.
- **Process Optimization and Automation:** Focus on analyzing and optimizing supply chain processes, and implementing automation to improve efficiency and reduce costs
- **Exception Management and Automation:** Develop strategies for managing exceptions and automating responses to supply chain events to ensure smooth operations.


Enrollment Now Open

Take the first step towards becoming a certified Supply Chain Analytics & Control Tower Professional. Enroll in our program and enhance your career.



Contact Us:

 info@ramaqchools.com

 +966536834733

 ramaqchools.com